

WILTSHIRE POLICE

# CPT Area Briefing

## Devizes Area Community Policing Team

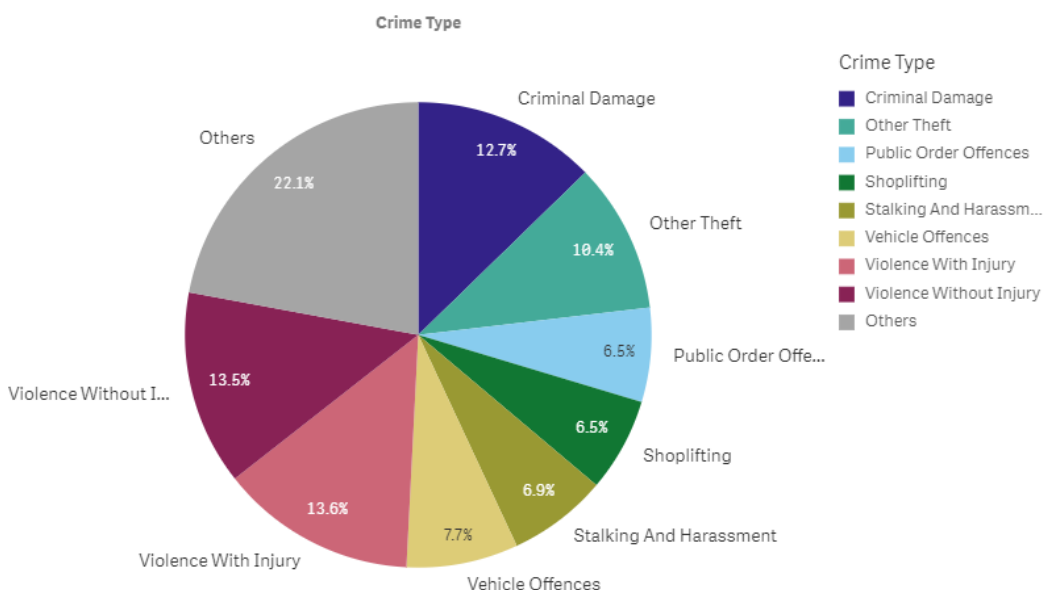


Proud to serve and protect our communities

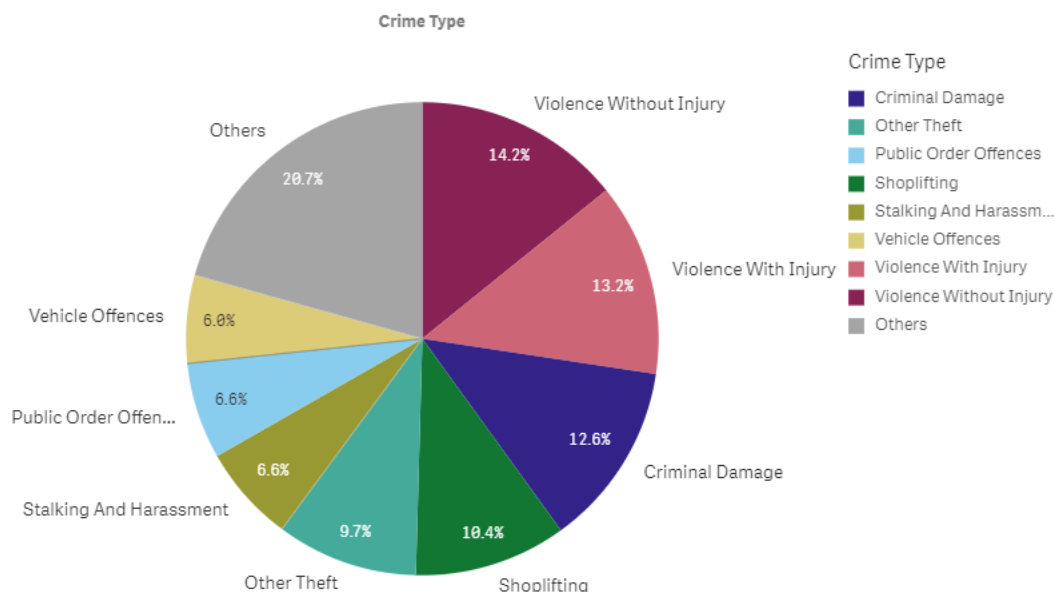
January/February 2020

### PERFORMANCE

Your Area - Five Highest Crime Groups (Previous 12 months)



Force Area - Five Highest Crime Groups (Previous 12 months)



Wiltshire East CPT - crime and incident demand for the 12 months to November 2019

WILTSHIRE POLICE

# CPT Area Briefing

Devizes Area Community Policing Team



Proud to serve and protect our communities

January/February 2020

## Force-wide

- Wiltshire Police has had an increase in the volume of recorded crime by 4.5% in the 12 months to November 19 and continues to have one of the lowest crime rates in the country.
- Our service delivery remains consistently good.
- In November, we received 8,234 999 calls which we answered within 5 seconds on average and 11,604 CRIB calls which we answered within 1 minutes 28 seconds on average.
- In November, we also attended 1,594 emergency incidents within 10 minutes and 30 seconds on average.
- Wiltshire Police has seen a 10% reduction in vehicle crime and 9% in residential burglaries in the 12 months to November 2019.
- The Crime Survey of England & Wales recently ranked Wiltshire as one of the top forces (78.3%) nationally for public confidence. It covers the 12 months to March 2019.  
The publication can be found here: [WWW.CRIMESURVEY.CO.UK](http://WWW.CRIMESURVEY.CO.UK)

For more information on Wiltshire Police's performance please visit:

PCC's Website - <https://www.wiltshire-pcc.gov.uk/article/1847/Performance>

HMICFRS Website - <https://www.justiceinspectrates.gov.uk/hmicfrs/police-forces/wiltshire/>

Police.uk - <https://www.police.uk/wiltshire>

WILTSHIRE POLICE

# CPT Area Briefing

Devizes Area Community Policing Team

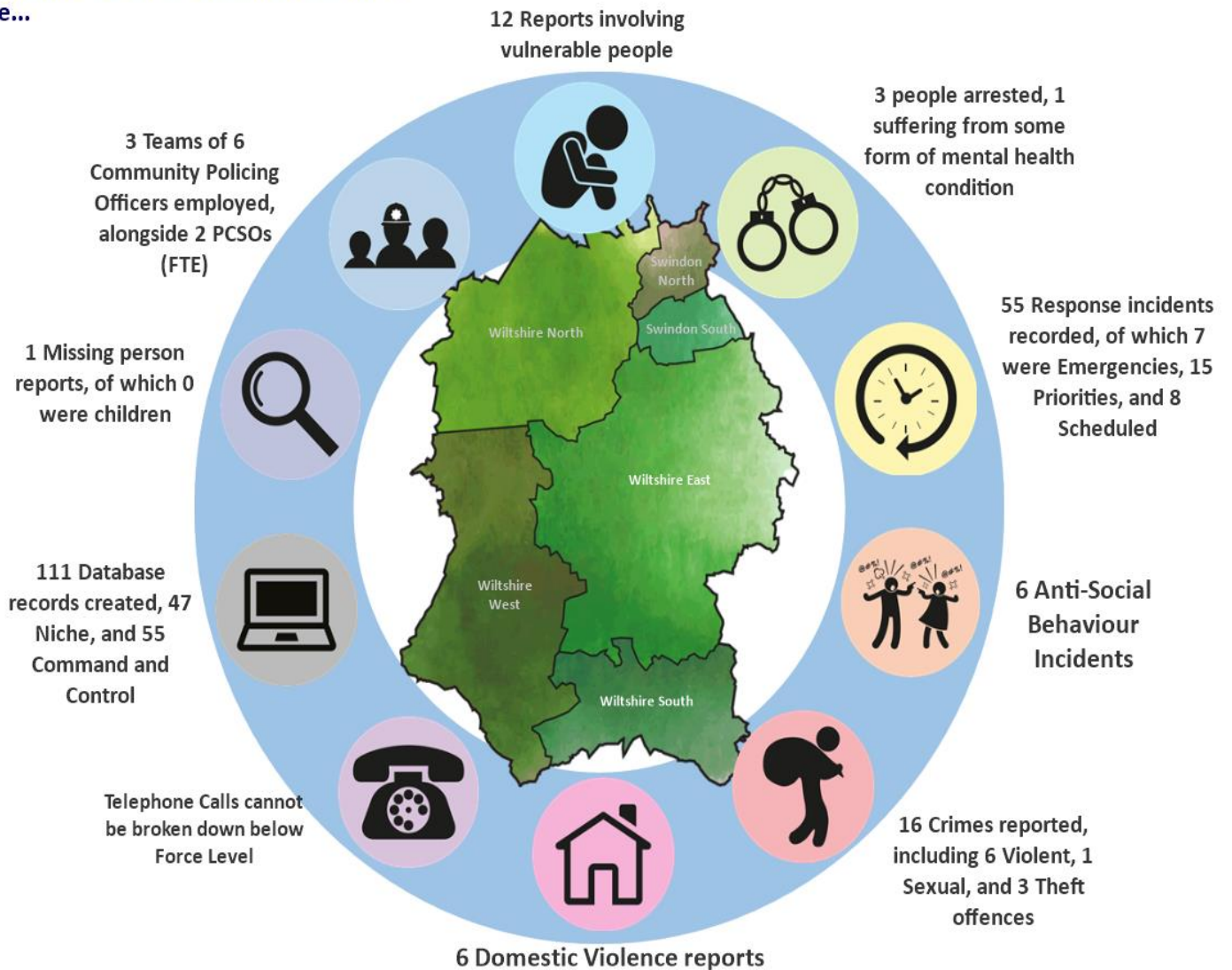


Proud to serve and protect our communities

January/February 2020

## Area specific

On an average day in Wiltshire East there were...



Wiltshire East CPT Demand Overview – 12 months to November 2019

WILTSHIRE POLICE

# CPT Area Briefing

Devizes Area Community Policing Team



Proud to serve and protect our communities

January/February 2020

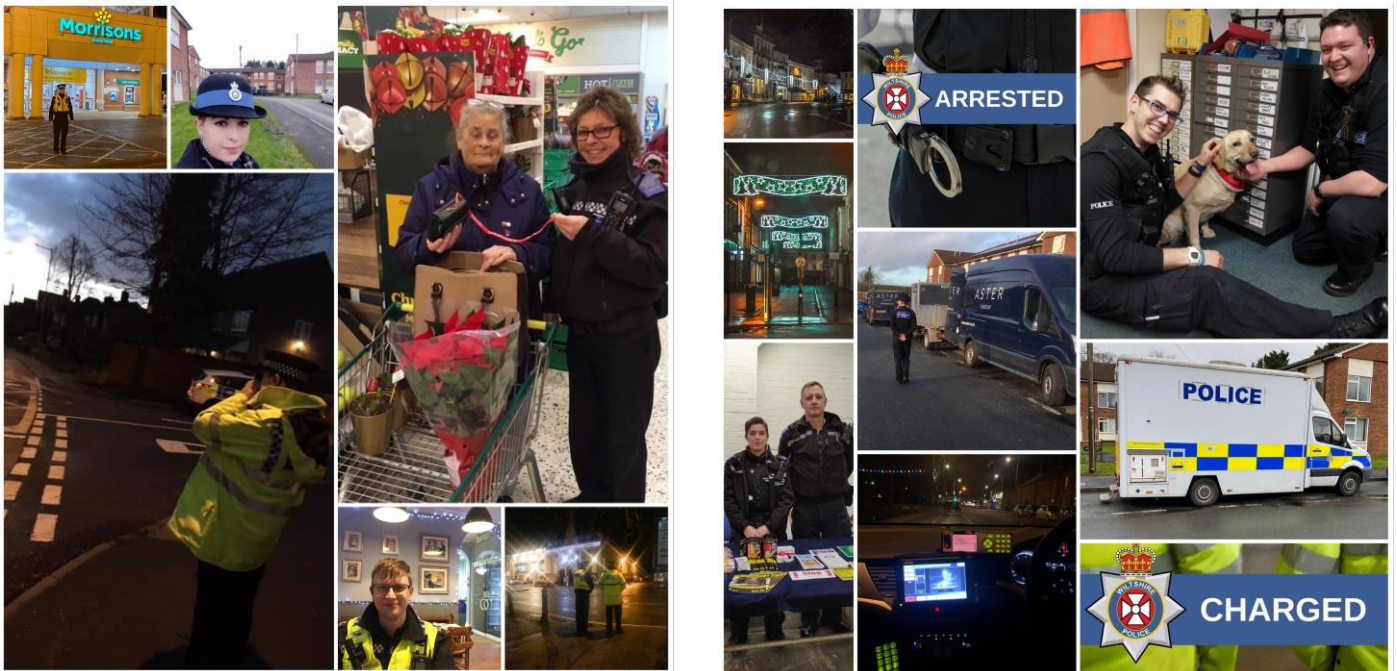
## HIGH LEVEL CPT UPDATES:

Crime Statistics December 2019 – January 2020

CRIME	DEVIZES TOWN	DEVIZES RURAL
ASB	8	4
BURGLARY	3	6
DRUG RELATED OFFENCES	5	0
THEFT	15	4
VIOLENT OFFENCES	53	20
CRIMINAL DAMAGES	24	14
PUBLIC ORDER	10	0
VEHICLE CRIME	4	1

Our Community Policing Teams have been out during the festive month in relation to #OPSPRUCE. Our officer have been conducting high visible foot patrol in the Town Centres, conducting licensing checks at licensed premises, conducting speed checks and targeting drink drivers.

We have been highly visible on Facebook and given regular updates.





WILTSHIRE POLICE

# CPT Area Briefing

Devizes Area Community Policing Team



Proud to serve and protect our communities

January/February 2020

## YOUR CPT – Devizes Area



Inspector Chris Martin



Sergeant Pete Foster



Neighbourhood PC Beth Butwell



PCSO Kelly Watts  
Devizes Rural



PCSO Georgie Dodd  
Devizes Town



PCSO Paula Yarranton  
Devizes Town

Contact us on [CPEastWiltshire@wiltshire.pnn.police.uk](mailto:CPEastWiltshire@wiltshire.pnn.police.uk)

In staffing news Inspector Chris Martin has returned to the team, while we welcome PC Rich Clark who will be concentrating on rural crime and PCSO Henry Bremner who will be covering Devizes Town.

You can find out more about Wiltshire East CPT, including news stories and contacts for local officers, on our website: [www.wiltshire.police.uk/WiltshireEast](http://www.wiltshire.police.uk/WiltshireEast)

We also have Devizes Police Facebook & Twitter accounts where we promote our work, put out information, appeals and press releases.

WILTSHIRE POLICE

# CPT Area Briefing

Devizes Area Community Policing Team



Proud to serve and protect our communities

January/February 2020

## LOCAL PRIORITIES

### Rural Crime Patrols -

It is imperative that we maintain a high visible presence within our rural county.

We will be aiming to regularly patrol our rural sites that unfortunately do become a target of vehicle and rural crime.

We have conducted a number of operations across our area targeting these offences, and will continue to do so in the coming months.

Patrolling our beauty spots also remains a priority.

### Priority 2:

### Burglaries/Unexpected Callers –

As the season approaches we continue to receive reports regarding burglaries within the Devizes, Marlborough and Pewsey area. Whilst the number is reducing the likelihood that in the months leading up to December/January this number could increase.

Targeted patrols, particularly in areas affected

### Priority 3:

### Theft by shoplifting -

During the busy Christmas shopping period and January sales theft by shoplifting increases. Operations and daily patrols will be carried out in order to deter these types of crime.

As already highlighted we conducted Operation Spruce to target traditional festive related spikes.

WILTSHIRE POLICE

# CPT Area Briefing

Devizes Area Community Policing Team



Proud to serve and protect our communities

January/February 2020

## HIGH LEVEL PCC UPDATES

- **Precept Consultation** – From 6 January, I will be consulting with residents and businesses in Wiltshire and Swindon on what they would be prepared to pay as part of their council tax bill next year's towards local policing. I am still waiting for notification from the Home Office on what our settlement will be in Wiltshire for 2020/21 and hope to be in receipt of this soon. I strongly encourage you to [submit your feedback on my website](#).

## HIGH LEVEL FORCE UPDATES

- We continue to implement **changes in our community policing teams** to better meet demand in our different patches. It is a phased approach and as of December the boundaries of our community policing teams changed with their names also changing to reflect the areas covered.

**The new list is:** Swindon Area CPT, Chippenham Area CPT, Royal Wootton Bassett Area CPT, Trowbridge Area CPT, Warminster Area CPT, Salisbury Area CPT, Devizes Area CPT and Amesbury Area CPT.

- **Changes to 101 system** – In mid-December the options available when members of the public call 101 have changed to allow for to be connected directly to some departments. They will also no longer be taking reports of shoplifting unless it is in progress, an offender is detained or there was violence to any members of the public or staff. Instead callers are encouraged to report the crime online and submit any available CCTV.

## GET INVOLVED

- You can keep up to date with the latest news in your area by signing up to our Community Messaging service – [www.wiltsmessaging.co.uk](http://www.wiltsmessaging.co.uk)
- You can follow your CPT on social media <https://www.wiltshire.police.uk/Followus>
- More information on your CPT area can be found here: [www.wiltshire.police.uk](http://www.wiltshire.police.uk) and here [www.wiltshire-pcc.gov.uk](http://www.wiltshire-pcc.gov.uk)